

## Expressive Arts Development (EAD)

We will continue to play our glockenspiels and learn different notes, as well as composing with percussion instruments. We will be creating some Peruvian sun art pictures and making some colourful flower art too. The children will develop blending skills and collage skills in the first half term. After half term we will be looking at the art of Wassily Kandinsky. The children will create their own clay house tiles and will be exploring paint and mixed media while learning about Kandinsky.

## Homework

In Wren Class we believe home reading has a **big impact**. The children will also begin to bring home phonic homework to complete in order to prepare them for Year 1. Please try to engage with these as often as possible. It really does make all the difference.

Reading (approx 10 minutes) at least 3 - 4 times a week. Please write in the books so we can see what they are engaging in at home.

## A few reminders...

We use **SeeSaw** as a means of communication, showing you some of their work and for you to message me quickly too.

You can also email me: [wrenclass@lavant.w-sussex.sch.uk](mailto:wrenclass@lavant.w-sussex.sch.uk)

Please also note that all weekly letters are available to read on the school website [www.lavant.w-sussex.sch.uk](http://www.lavant.w-sussex.sch.uk).

Please continue to keep us informed if someone else is collecting your child from school.

Please ensure **all** clothes (including coats) **are clearly named**.

Please wash and return **water bottles** each day.

**BIRTHDAYS:** Children can wear home clothes to school on their birthday or the Friday before - if it falls on a weekend or holiday 😊.

**MANY THANKS** 😊

Thank you for all your support. We hope you love seeing your child grow as a learner this term

Best wishes,

Ali Totman



## LAVANT C.E. PRIMARY SCHOOL WREN CLASS (Reception) SUMMER TERM 2026

### TERM DATES

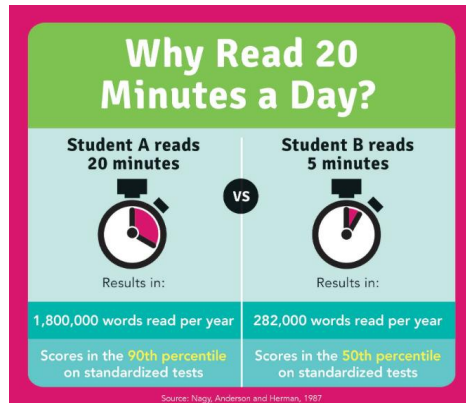
TERM ENDS: Wednesday 22<sup>nd</sup> July 2026

HALF TERM: Monday 25<sup>th</sup> May - Friday 29<sup>th</sup> May 2026

Bank Holiday - Monday 3<sup>rd</sup> May

Weald and Downland trip - Friday 8<sup>th</sup> May 2026

INSET - Monday 18<sup>th</sup> May 2026



Welcome to the Summer term. It is hard to believe it has been almost a year since we came to visit you all. Our term began with a BLLP learning journey where we met up with some other schools. We have created some patchwork squares which will be sewn together to create patchwork quilts for each of the classes that took part. We have now just begun our 'Big Build' learning journey where the children will explore the history of houses, they will explore local architecture and we will visit the Weald and Downland Museum. We will also get creative designing our own houses, making clay tile houses and also building waterwheels!

After half term, we commence 'Along the Inca Trail' where we will head to the country of Peru in South America! The children will compare the geography, city life and culture with their own. Then we will be taking part in the whole school learning journey which will be linked to the whole school production. This is very much top secret at the moment but expect some news in the next few weeks! The year will end with a creative slant where we will look at the work of Wassily Kandinsky. We will be creating our own works of art, listening to and creating music and writing some colourful poems.

### **Personal, Social and Emotional Development (PSED)**

The children remain caring and kind towards each other. They have a good understanding of themselves and how their actions can impact others. They will continue to look at what makes a good friend and how to maintain friendships over time. We will be looking at how we are unique and how this helps us to be a good team as we can all bring different strengths to the table. We will also be looking at our wellbeing: exercise, looking after ourselves, being safe and eating healthily. A real focus this term will be for the children to develop independence and self reliance as they continue to gain more skills and resilience.

### **Communication and Language (CAL)**

Our focus this term is on developing greater independence and accuracy in writing and reading simple sentences. The children will be writing a diary as we tour Peru. They will also be retelling a familiar story in their own words, using descriptive language and thinking about how the plot moves forwards. They will be planning their ideal house in the Big Build, using labels and description to explain their ideas clearly. We will also be looking at books which use characters and stories within a different story. Then finishing the term with some poetry.

### **Physical Development**

We will be using the outdoor area to meet the needs of the children's physical development. We will have a focus on Fridays for developing key skills in throwing, catching, balancing, aiming and striking. However, we will be outside most days and so the children will have opportunities to build their physical skills throughout the week.

Please could the children continue to wear their PE kit to school every Wednesday. They will stay in it all day. PE kit is: trainers, shorts and PE T-shirt. The children will continue to have lessons with Mr Belding where they will be looking at athletic skills and practising skills for sports day.

Please may we remind you that if your child has their ears pierced, earrings will need either to be removed for the day or covered with micro pore tape. Please remember that long hair must be tied back every day.

### **Understanding the World (UW) incl Religious Education**

We will be looking at how houses have changed from the past until now and how materials used in building have developed. Our trip to the Weald and Downland will help the children to consolidate their understanding as well as learn new knowledge during our workshops. We will also be using maps of the school and

the local area to learn about map reading and keys. The children will also explore the country of Peru. We will look at geographical features, culture, the capital city and food.

In RE we will be looking at what makes every person unique and special. We will be focusing on how Christians and Hindus celebrate this. We will also learn about how Christians and Jews care for our wonderful world.

### **Literacy**

Phonics: During this term we will revisit digraphs and build children's confidence in fluently reading words including these sounds as well as supporting them to become more accurate in using them to spell. Please can I encourage you to look at the phonics support sheets coming home next week in order to best support your child over this next term. The children will also be learning alternative spellings for familiar sounds eg they know the sound ai like in main, the alternative sound for ai is ay like in play.

Books: Children will change their books each week. In addition, they will have a guided reading slot with an adult each week building their understanding of what they are reading, vocabulary and how stories are 'put together'.

Writing: The children totally see themselves as writers now and we will continue to provide structured teaching sessions with real outcomes as well as encouraging them to write for a variety of purposes around the classroom. During phonics we will focus on spelling and we will have separate handwriting sessions to help with fluency and accuracy.

### **Maths**

In maths, we will be following the White Rose sequence of teaching. It provides opportunities for small steps of learning which allow for a deep understanding of number and opportunities for children to make links, spot patterns and 'know' which amount they can see. This term we will be learning:

- fluency with number bonds to 10
- Numbers 20 and beyond
- adding and taking away to 20
- doubling, sharing and grouping
- finding patterns in number
- consolidating understanding of shape and space.

Please continue to support the children with recognising amounts without counting and practising their number bonds to 10.