

## Homework

In Wren Class we believe home reading has a **big impact**. The children will continue to bring home phonic homework to complete. The children will also have a login in to Spelling Shed. (please see separate letter) Please try to engage with these in a little and often manner. It really does make all the difference.

Reading (approx 10 minutes) at least 3 - 4 times a week. Please write in the books so we can see what they are engaging in at home.

### A few reminders...

We use **SeeSaw** as a means of communication, showing you some of their work and for you to message me quickly too.

You can also email me: [wrenclass@lavant.w-sussex.sch.uk](mailto:wrenclass@lavant.w-sussex.sch.uk)

Please also note that all weekly letters are available to read on the school website [www.lavant.w-sussex.sch.uk](http://www.lavant.w-sussex.sch.uk).

Please continue to keep us informed if someone else is collecting your child from school.

Please ensure **all** clothes (including coats) **are clearly named**.

Please wash and return **water bottles** each day.

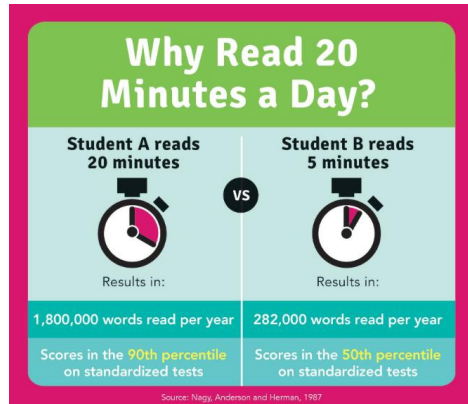
**BIRTHDAYS:** Children can wear home clothes to school on their birthday or the Friday before - if it falls on a weekend or holiday 😊.

**MANY THANKS** 😊

Thank you for all your support. We hope you love seeing your child grow as a learner this term

Best wishes,

Ali Totman



LAVANT C.E. PRIMARY SCHOOL  
WREN CLASS (Year 1)  
SUMMER TERM 2026

### TERM DATES

TERM ENDS: Wednesday 22<sup>nd</sup> July 2026

HALF TERM: Monday 25<sup>th</sup> May - Friday 29<sup>th</sup> May 2026

Bank Holiday - Monday 3<sup>rd</sup> May

Weald and Downland trip - Friday 8<sup>th</sup> May 2026

INSET - Monday 18<sup>th</sup> May 2026

Welcome to the Summer term. Our term began with a BLLP learning journey where we met up with some other schools. We have created some patchwork squares which will be sewn together to create patchwork quilts for each of the classes that took part. We have now just begun our 'Big Build' learning journey where the children will explore the history of houses, they will explore local architecture and we will visit the Weald and Downland Museum. We will also get creative designing our own houses, making clay tile houses and also building waterwheels!

After half term, we commence 'Along the Inca Trail' where we will head to the country of Peru in South America! The children will compare the geography, city life and culture with their own. Then we will be taking part in the whole school learning journey which will be linked to the whole school production. This is very much top secret at the moment but expect some news in the next few weeks! The year will end with a creative slant where we will look at the work of Wassily Kandinsky. We will be creating our own works of art, listening to and creating music and writing some colourful poems.

## Phonics/Spelling/Grammar

We will continue to use Animaphonics on a daily basis for more grammar-focused learning, looking at suffixes, their associated spelling patterns and alternative spellings. We will consolidate our knowledge from over the year in preparation for the Year 1 Phonics Screening (more on those in the Assessments section)

Spelling sheets sent home each Friday consolidate these spelling patterns and the common exception words studied that week. You can further support your child's spelling development by practising days of the week, colours and the "Common Exception words". **These spelling lists can be found at the back of your child's reading diary along with other key Year 1/2 information.**

## Reading

As in previous terms, we intend to hear each child read individually in school once a week and will participate in a group reading session once every week. Please come and see us if you feel that your child is not on the correct level book and do encourage them to change their book independently.

## Maths

We will be recapping and revising previously studied methods of calculation but also exploring these areas over the term:

- The beginnings of multiplication and division - sharing and grouping. Counting in steps of 2, 5 and 10.
- Fractions: finding halves and quarters
- Position and direction
- Place value within 100
- Money and Time

As part of their weekly maths sessions, the children have the opportunity to reason about their understanding of each concept (in other words explain how they know) and apply it to solve problems.

At the beginning of each lesson the children answer questions and practise their maths fluency to help them recall facts quickly. We also revisit prior learning to ensure they are remembering and apply what they already know.

## Assessments

Alongside the school's own end of year assessment procedures, where we gauge each child's progress, you will be aware that there are statutory assessments for Year 1 to assess their phonetic learning so far. Please be rest assured though that your children are very unaware that they are being assessed and the 'test' is very similar to activities we use during our termly phonic assessments and in our phonic sessions.

Year 1 will participate in a Phonics Screening check in mid June. Again, we prepare the children in advance for this and the check is carried out in an informal and familiar manner.

If you have any questions about any of these assessment please email us or catch us at the end of the day.

## Physical Education (P.E.)

The children will continue to have PE every Wednesday with Mr Belding, our very fabulous South Coast Sports coach.

As before, the children should wear their PE kit to school on a Wednesday. If your child is wearing a pair of lace-up trainers, please could you encourage them to practise lacing them independently. As you can appreciate, lacing 30 pairs of shoes throughout the day can take some time!

We will have access to continuous physical activities with our amazing outdoor area throughout the week. On Friday afternoon, the children will have an additional session in the outdoor area where we focus on throwing, catching, aiming, striking and balancing.

## RE and PSHE

In RE the children will be exploring baptism and how Christians welcome people into the church. Then after half term we will look at the importance of being thankful and prayer in the Jewish faith.

In PSHE the children will be learning about economic wellbeing including what is money, what is a bank, spending and saving and what is a job. They will then be learning about health and wellbeing including sleep and relaxation as well as health and hygiene.